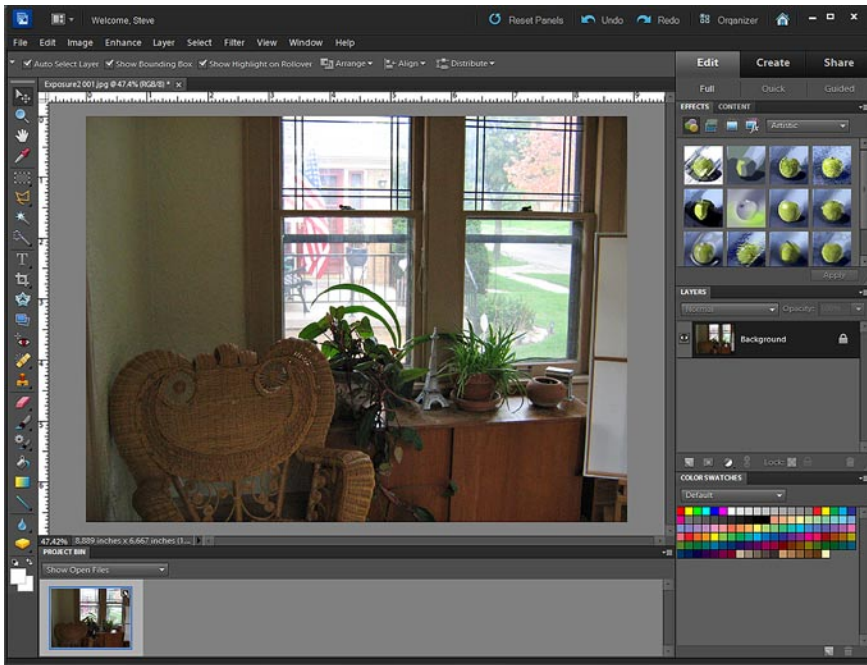




What's new in Photoshop Elements 10?



Rather than drastically revising Photoshop Elements in version 10, Adobe continues to refine and improve this already terrific product.

The interface itself is barely changed at all from Version 9. Not even the color scheme has been revised.

As in the past, the program performs almost flawlessly – handling even large files on a modestly-powered computer with ease.

And, even if you have to dig to find the new features, they're actually pretty cool – building on the program's strengths rather than bloating it with unnecessary junk.

We explore each of these new features and how to use it in our book, *The Muvipix.com Guide to Photoshop Elements & Premiere Elements 10*.



Type on Selection, Shape or Custom Path

An exciting new feature in version 10 is the ability to **Type On Selections, Shapes or Custom Paths**.

Using the **Type On** tool, you can set your text to flow around the outline of a selected area, custom shape or path.

These selections, shapes and paths can be drawn with the **Type On** tools or you can use the **Type On** tools to type around an existing shape or selection – or you can use a combination of tools to create any shape or selection to type your text on!

And, yes, the text remains editable even after it has been applied to a shape, selection or path.



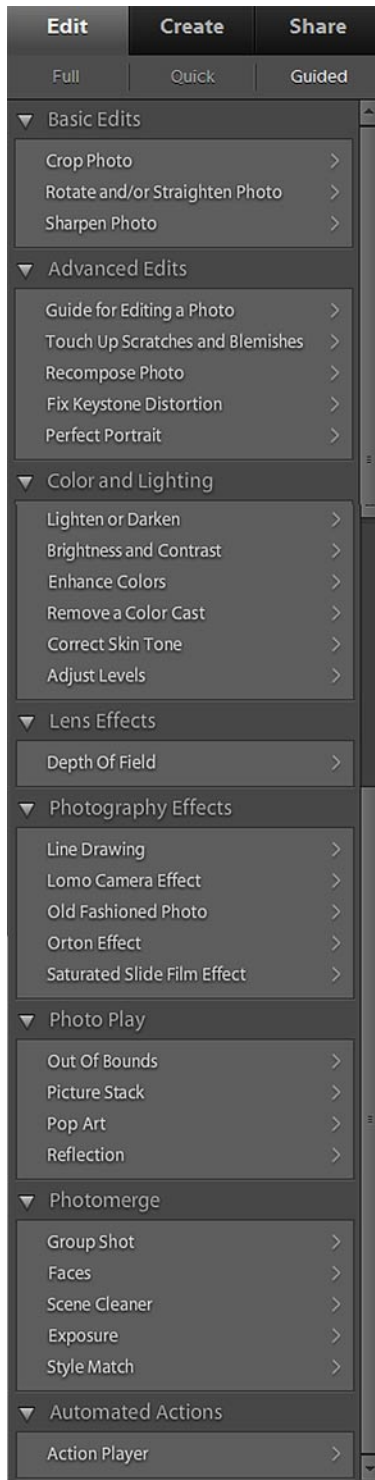
Rule of Thirds and Golden Ratio guides on the Crop Tool

As you define an area to crop in Photoshop Elements 10, the **Crop Tool** will display an overlay of dotted lines dividing your proposed crop area into three horizontal and three vertical regions.

These guides are to help you compose your cropped photo by positioning your subject so that he or she is in one of the more aesthetically pleasing "thirds" rather than dead center in the picture.

Additionally, the **Crop Tool** can be set to constrain the shape of your crop to the **Golden Ratio**, considered by many artists to be the ideal proportions of height and width.

continued



New Guided Edits

Adobe has added a number of new, fun **Guided Edits** to the latest generation of Photoshop Elements – bringing the total number of semi-automatic **Guided Edits** to 30!

Among the new **Guided Edits** are:

The Orton Effect, which uses blur, noise and brightness to give your photo a soft, dreamy look.

Depth of Field, which uses a layer mask and blur to focus on a central object in your photo, surrounding it with softness and blur.

Picture Stack, which breaks your photo into smaller photos, arranged as if they're parts of an overlapping collage.

The Action Player, a new tool that lets you use pre-written scripts to automatically make your photo narrower, crop it to a fixed size or apply a special photographic effect.

New Smart Brush effects

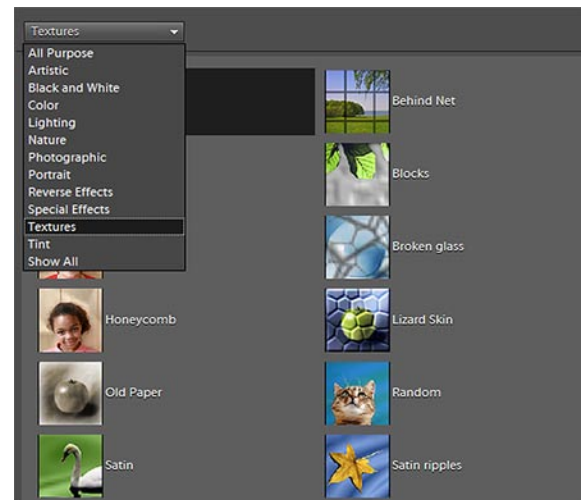
The **Smart Brush Tools**, which can be used to add blue to a sky or red to a person's lips, now include some new effects for enhancing your photos:

Artistic, which can make your photo look like a oil painting, a pencil sketch or flat color painting.

Textures, which make your photo look as if it's been printed onto a brick wall, lizard skin, a honeycomb, satin ripples, etc.

Tints, for shifting the overall color or your photos or images.

Additional enhancement options have also been added to a number of the existing categories.



Many new options have been added to the Smart Brush library.

For more information on these new features as well as all of tools available in the Elements programs, see *The Muvipix.com Guide to Adobe Premiere Elements 10* and *The Muvipix.com Guide to Photoshop Elements & Premiere Elements 10*, available in the [Muvipix Book Store](#).