



What's new in Photoshop Elements 11?



Adobe has really given Photoshop Elements, as well as Premiere Elements and the Elements Organizer, a major overhaul in version 11.

To improve readability, the program now uses a bigger, brighter interface with its tabs and buttons labeled with big, clean text.

To reduce clutter, more tools are hidden under buttons or stored in tabbed interfaces – easy to access but out of the way.

And the program itself has been tightened up, improving performance and stability, even when working with large photo files.

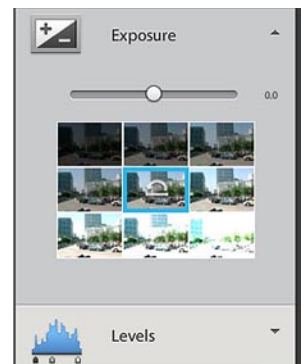
Additionally, the folks in San Jose have ladled on the new features, particularly in the **Quick** and **Guided Editing** workspaces, where you'll find lots of new tools for cleaning up your pictures and creating photo effects.

Among the highlights are:

An improved Quick Edit workspace

Open your photo in the new **Quick Edit** workspace and you'll find tools for adjusting its exposure levels, correcting its color, shifting its color temperature and sharpening the picture. In addition, this space now includes tools for fixing red eyes, whitening teeth and removing blemishes.

Its lighting and color adjustment tools use an intuitive new **Quick Fix Preview** tool, which allows you to test drive any changes to your photo simply by hovering your mouse over the variations on its tic tac toe-style panel.



Quick Fix Preview panels allow you to test drive adjustments by just hovering your mouse over them.



The Tilt-Shift effect gives your scenic photos the exaggerated depth of field of photos of miniatures.

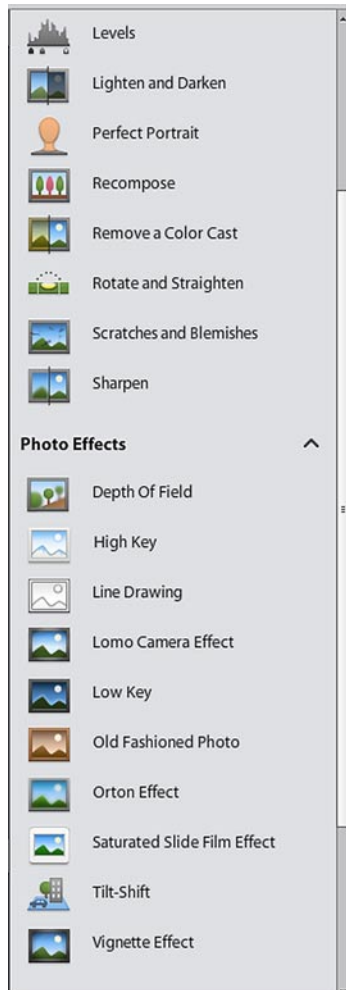
New Guided Edits

There are also many improvements to the **Guided Edits** workspace, with its wizard-like tools that take you step-by-step through process of correcting or improving your photos or creating special effects.

Nearly every tool in the Photoshop Elements **Toolbox** shows up somewhere in its **Touchup Guided Edits**.

Additionally, Adobe has added some cool, new effects to its **Guided Photos Effects**. Among these are step-by-step wizards for creating a **High Key** and **Low Key** effect, for turning your photo into a **Line Drawing**, for adding a **Vignette Effect** or for creating a **Tilt-Shift** effect that exaggerates depth-of-field so that a scenic photo can appear to be made up of tiny miniatures.

continued



Some of the exciting new, semi-automatic Guided Edits.

The Actions Panel

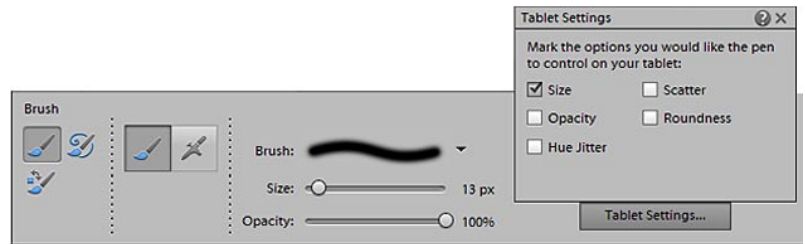
And, as if a larger library of **Guided Edits** weren't enough, Adobe has also included an **Actions** panel, a very cool feature borrowed from the professional version of Photoshop. **Actions** are pre-recorded effects or other tasks that can be applied to your photos simply by "playing" them.

Among the included library are **Actions** that add borders to your photos, resize or crop them, **Actions** that add a faded ink or sepia tone to your image and **Actions** that automatically make your photo look like a Polaroid-style snapshot!

The Tool Options Bin

The old **Options Bar** has been replaced by a bigger, more feature-rich **Tool Options Bin**. Customization options for your tools are easier to access, and many include new settings and presets.

This **Tool Options Bin** even includes support for tablets, so that many of your Photoshop



Options for many tools include support to tablets.

Elements tools can more effectively interface with devices like the Wacom Bamboo and other drawing tablets.

New Filters

Some very nice new filters have been added under the **Sketch** category.

The **Pen & Ink** filter makes your photo look as if it were drawn and painted with ink.

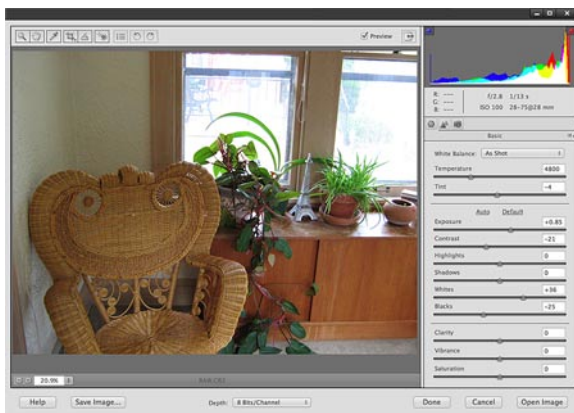
The **Comic** filter does an amazing job of making your photos look as if they are illustrations in a comic book.



And the **Graphic Novel** filter gives your photos the look of a highly stylized ink drawing.

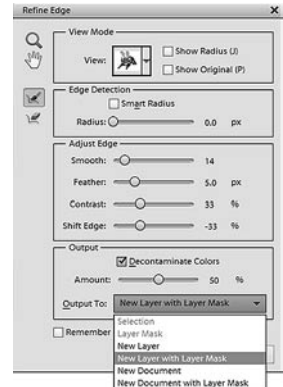
Improved Camera RAW support

If you're a "serious" photographer, you'll likely also appreciate the improvements to the Camera RAW interface. In fact, it's surprising to see such a powerful Camera RAW interface on a consumer product. But, particularly in the last couple of years, Adobe has put a tremendous amount of effort into making Photoshop Elements more up to the task of working with this advanced digital photo format.



Advanced Refine Edge Options

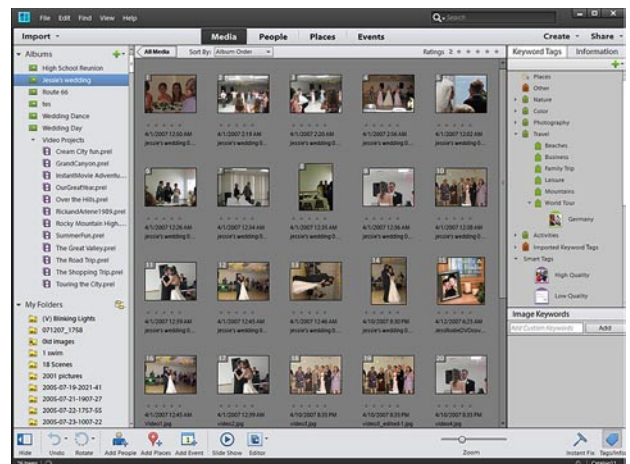
The **Refine Edge** tool has also been given a major upgrade in version 11. Borrowing some advanced features for refining selections from the professional version of Photoshop, the new **Refine Edge** tool makes selecting around fine details, like fur and hair, not only easier but practically automatic!



Organizer improvements

Adobe has put at least as much time and effort into improving the Elements Organizer as it has Premiere Elements and Photoshop Elements.

Adobe has put at least as much time and effort into improving the Elements Organizer as it has Premiere Elements and Photoshop Elements. Not only does the program perform more efficiently than ever before, but Adobe has added or expanded its ability to search and manage your media files by the location the video or photos were shot, the people in the picture, the event they recorded and even by their similarity to other video and photo files.



For more information on these new features as well as all of tools available in the Elements programs, see *The Muvipix.com Guide to Adobe Premiere Elements 11* and *The Muvipix.com Guide to Photoshop Elements & Premiere Elements 11*, available in the [Muvipix Book Store](#).